



# Worlds of the F16 Class



TRAVEMUENDE WEEK  
19.07.- 28.07.2013

124 years of tradition and sailing

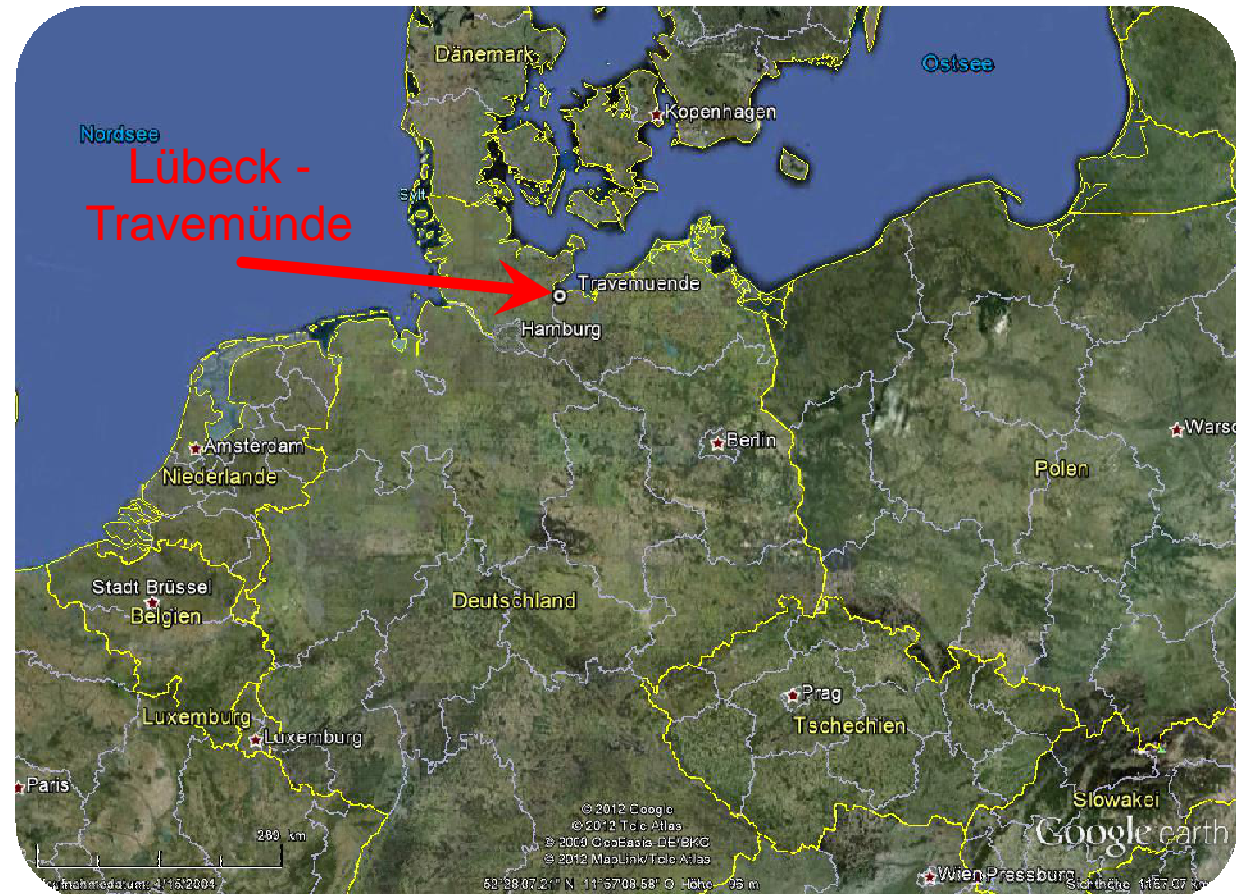
- Proposed Dates 19-28 July 2013
- Friday – Sunday: Registration
- Saturday – Sunday : Measurement
- Monday – Friday (racing days)
- Social Events:
  - Sunday: Opening Ceremony
  - Tuesday: Cut Party
  - Thursday: Reception of the Hanseatic town of Lübeck on the squarerigger „Passat“
  - Friday: Prize Giving





## Location

- Germany, Baltic Sea
- Lübeck Bay in front of Travemünde
- Airport Hamburg (70 min by car)
- Airport Lübeck (20 min by car)
- Train connections to Hamburg,
- Ferry lines to Scandinavia and Russia
- For sightseeing, the old traditional Hanseatic town Lübeck is reachable by bus or train



- [Google maps Link too Travemuende](#)





Travemünder Woche

Lübecker Yacht Club e.V. -since 1898-



## Location

F16  
berthing place

Lübecker Yacht  
Club

Race office +  
„Sailors Village”

Coach Boat  
berthing place

Event Area  
Travemünder Week

Camping for  
competitors

Ferry  
(free for  
Competitors)

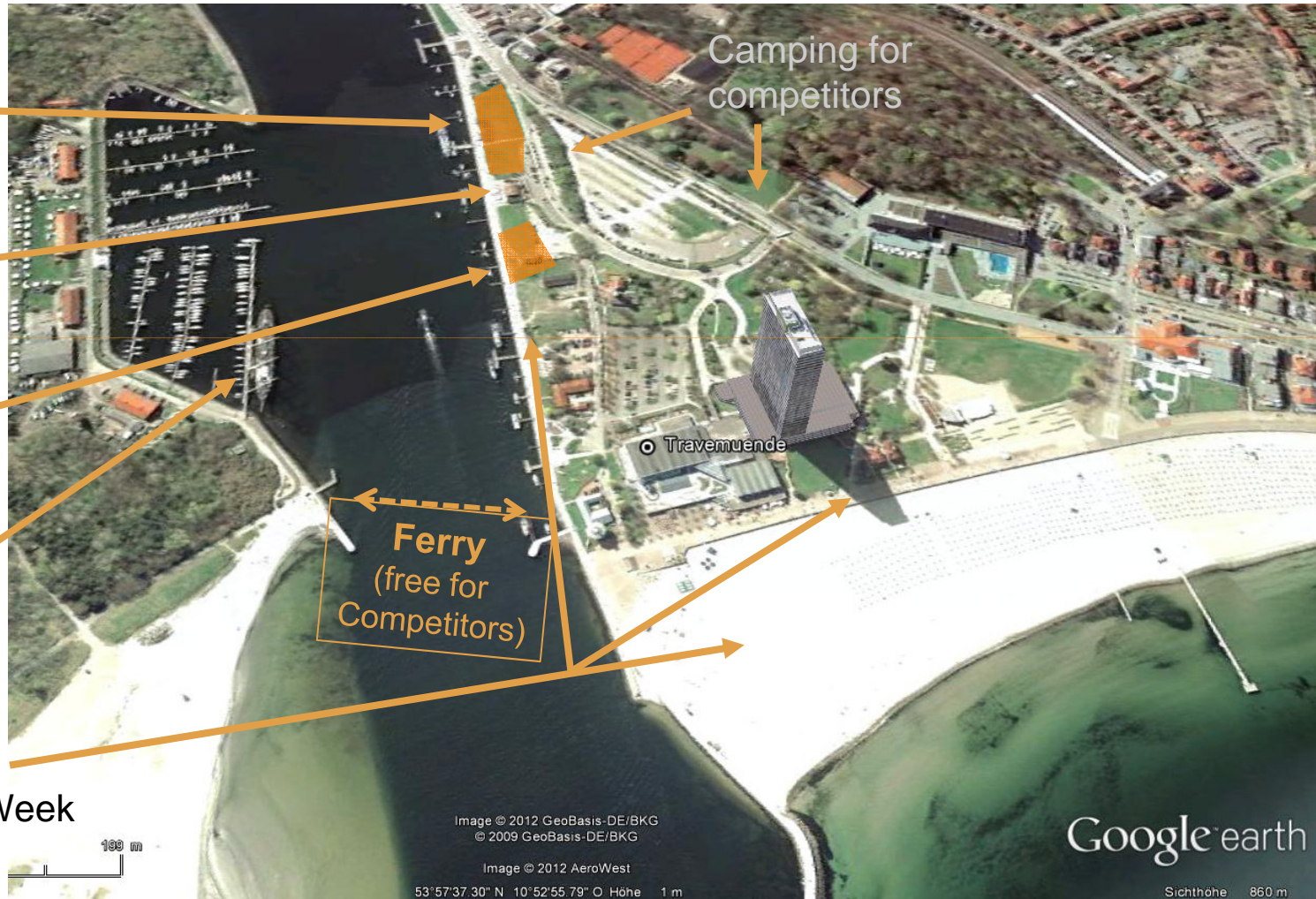


Image © 2012 GeoBasis-DE/BKG  
© 2009 GeoBasis-DE/BKG

Image © 2012 AeroWest

53°57'37.30" N 10°52'55.79" O Höhe 1 m

Google earth

Sichthöhe 860 m



## Location

- Race Office for all classes
- Meeting point at the event location
- (Event tent)
- Short distances between boat park, launching area, camp site and race office.
- Showers and toilettes close to the location only for the event.
- Marquee for measurement
- Shops, supermarkets, restaurants and bars are accessible by bike in 5-10 minutes.
- Day and night security for the location
- Rentable Holiday apartments & House





## Annual Facts and Figures

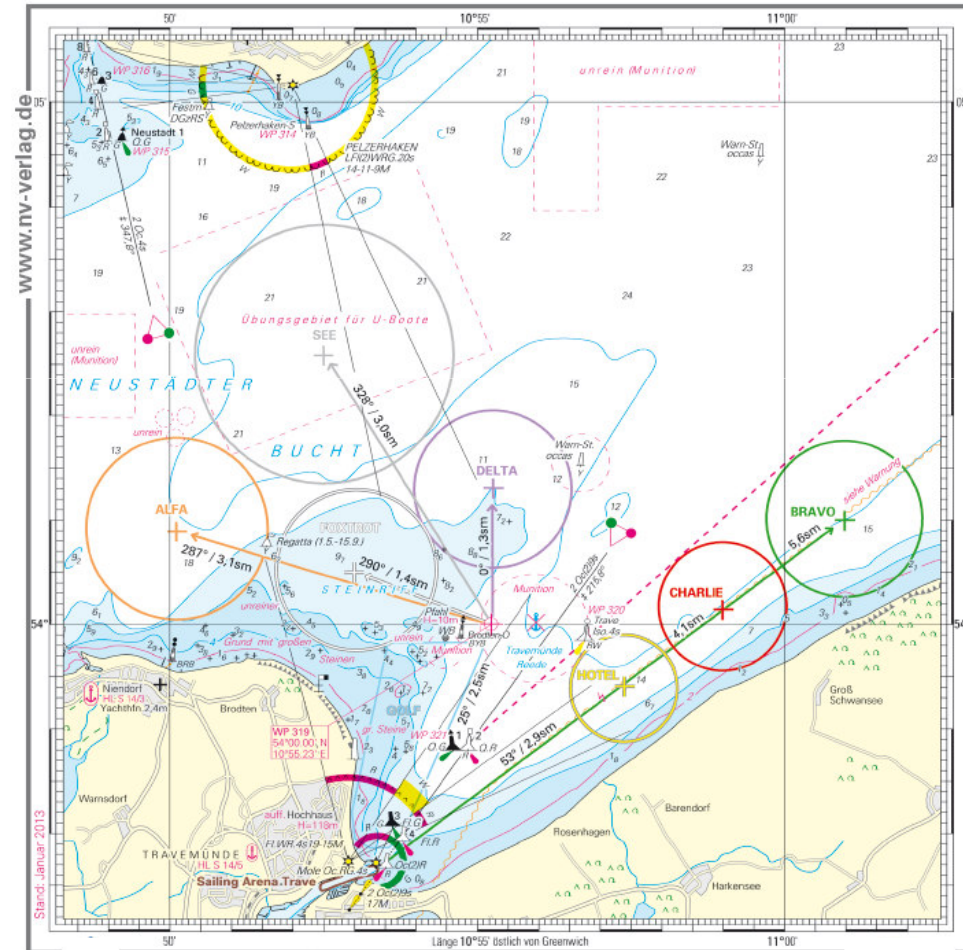
- 1 million visitors
  - One of the biggest sailing events in Europe
  - 2.000 competitors, 700 boats, 25 nations,
  - 8 Course Areas + Offshore Races
  - Onshore Event with Live-Bands and Food
- 
- Perfect combination of sailing and public event
  - national and international media interest
  - Professionell media-team with contacts to national and international agencies, magazines and TV







- 8 course areas are possible
- No tides and currents
- Weather conditions in July: normally summer conditions with wind from north-east or north-west of 2-5 Beaufort
- Average Temperature: Air 20 degrees Celsius and Water: 18 degrees Celsius
- Professional German rescue organisation is responsible for shore and offshore medical service.





## SAILING ARENA TRAVE



The Luebeck Yacht-Club offers an outstanding sailing venue for media and spectators the spectacular **SAILING ARENA TRAVE** – directly in the mouth of River Trave!







Lübecker Yacht Club e.V. -since 1898-



CONTACT

Die Travemünder Woche gemein. GmbH  
c/o Lübecker Yacht-Club e.V.  
Trelleborgallee 2a  
23570 Lübeck Travemünde  
Germany  
Phone +49 451 8690 0  
Fax + 49 451 86 90 22

[info@travemuender-woche.de](mailto:info@travemuender-woche.de)

Information and Registration

[www.travemuender-woche.com](http://www.travemuender-woche.com)

